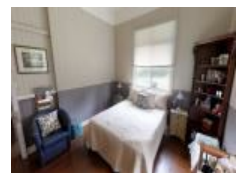


25 Basil Rd, Nimbin, NSW 2480

\$450,000

House 3  1  11 



A Perfectly Positioned Lifestyle Awaits

Surrounded by the flowing hills of the Nimbin valley & Set on approx.1.3 acres this beautiful home was built in 1890 and relocated to Nimbin from Toowoomba in the 1990s where it originally served as a station managers homestead.

Open for Inspection

Sat, 02 Mar 2019 - 2:00 PM to 3:00 PM

Inside you'll find original polished timber floors, high ceilings, and timber walls throughout with pressed metal ceilings. A renovated well-appointed kitchen, with 5 burner gas and electric stove. 3 generous sized bedrooms, + sleepout, 1 bathroom, an enclosed side and rear verandah which has been converted into a front arts/crafts/sewing room.

Spacious air-conditioned lounge room with wood heater to provide comfort on those cool winter nights. The kitchen and bathroom have been recently updated, downstairs has a huge open area for car accommodation, storage or workspace. This property is a great opportunity for the home renovator to add their personal touch.

The backyard has uninterrupted views of the Nimbin rocks and is ideal for outdoor living with a newly constructed large covered verandah overlooking a well-established rainforest, full of native wild life including resident kookaburras, cockatoos bower birds, & lyre birds, with so much to offer the young or growing family, There are abundance of fruit trees, including Mangos, Apples, Oranges, and Bananas. Located within short drive to Nimbin Village, and 30 minutes to Lismore, with 1 hour to Ballina and just over an 1h30m to the sandy beaches of the Gold Coast.

To view a 3D Virtual tour please copy and paste the link below
<https://my.matterport.com/show/?m=Z31Tgkwx5JW>

Contact Christopher Williams to secure your inspection on 0431 249 447.

Listed By



Chris Williams
Phone: (02) 6621 3900
Mobile: 0431 249 447

